



# DX300-340-420LC Demolition | Crawler Excavator



# Technical specifications

DX300LC

DX340LC

DX420LC

## \* Engine

### • Model

DX300 - DX340: Doosan DLo8  
 DX420: Doosan DV11  
 "Common Rail" engine with direct fuel injection and electronic control, 4 valves per cylinder, vertical injectors, water cooled, turbo charged with air to air intercooler.  
 The emission levels are well below the values required for Phase III.

### • Number of cylinders

6

### • Nominal flywheel power

DX300: 147 kW / 197 Hp (200 Ps) at 1.900 rpm  
 DX340: 184 kW / 247 Hp (250 Ps) at 1.750 rpm  
 DX420: 218 kW / 293 Hp (297 Ps) at 1.800 rpm

### • Max torque

DX300: 93 kgf.m (911 Nm) at 1.300 rpm  
 DX340: 117 kgf.m (1.147 Nm) at 1.300 rpm  
 DX420: 140 kgf.m (1.373 Nm) at 1.300 rpm

### • Piston displacement

DX300 - DX340: 7.640 cm<sup>3</sup>  
 DX420: 10.964 cm<sup>3</sup>

### • Bore & stroke

DX300 - DX340: 108 mm x 139 mm  
 DX420: 128 mm x 142 mm

### • Starter

DX300 - DX340: 24 V / 6 kW  
 DX420: 24 V / 7 kW

### • Batteries

2 x 12 V / 150 Ah

### • Air cleaner

Double element and pre-filtered Turbo with auto dust evacuation.

## \* Environment

Noise levels comply with environmental regulations (dynamic values).

### • Sound level guarantee

104 dB(A) (2000/14/EC)

### • Cab sound level

73 dB(A) (6396/14/EC)

## \* Hydraulic system

The heart of the system is the e-EPOS (Electronic Power Optimizing System). It allows the efficiency of the system to be optimized for all working conditions and minimizes fuel consumption.

The new e-EPOS is connected to the engine electronic control via a data transfer link to harmonize the operation of the engine and hydraulics.

- The hydraulic system enables independent or combined operations.
- Two travel speeds offer either increased torque or high speed tracking.
- Cross-sensing pump system for fuel savings.
- Auto deceleration system.
- Two operating modes, two power modes.
- Button control of flow in auxiliary equipment circuits.
- Computer-aided pump power control.

### • Main pumps

2 variable displacement axial piston pumps - max flow:  
 DX300: 2 x 231,7 l/min  
 DX340: 2 x 265 l/min  
 DX420: 2 x 315 l/min

### • Pilot pump

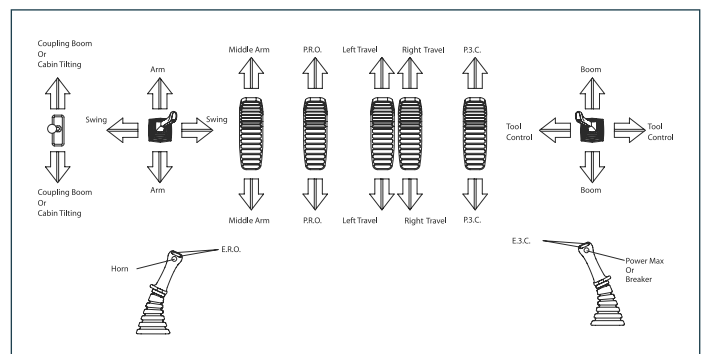
Gear pump – Max flow: 27,4 l/min

### • Main relief valves

|                  |                                  |                                  |
|------------------|----------------------------------|----------------------------------|
| Boom/arm/bucket: | DX300 - DX340                    | DX420                            |
| - Normal mode:   | 330 kg/cm <sup>2</sup> (324 bar) | 320 kg/cm <sup>2</sup> (314 bar) |
| - Power mode:    | 350 kg/cm <sup>2</sup> (343 bar) | 350 kg/cm <sup>2</sup> (343 bar) |
| Travel:          | 330 kg/cm <sup>2</sup> (324 bar) | 320 kg/cm <sup>2</sup> (314 bar) |
| Rotation:        | 275 kg/cm <sup>2</sup> (270 bar) | 270 kg/cm <sup>2</sup> (265 bar) |

## \* Controls

When lower boom to park or transport, you must use security release switch because the system can not allow to lower boom for safety.



# Standard equipment

## \* Standard equipment

### • Hydraulic system

- Boom and arm flow regeneration
- Boom and arm holding valves
- Swing anti-rebound valves
- Spare ports (valve)
- One-touch power boost
- Piping for hammer (one way)
- Piping for crusher
- Piping for rotating

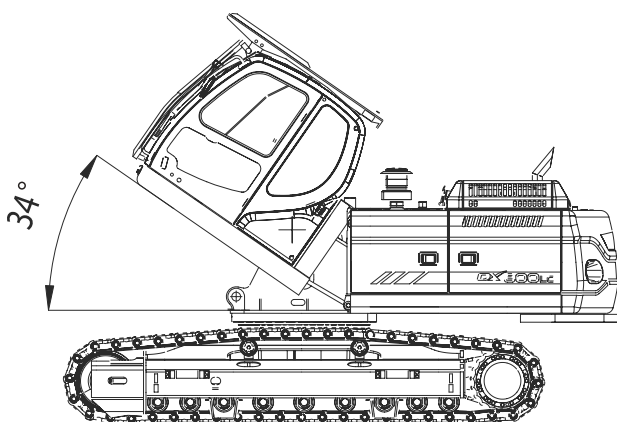
### • Cab & interior

- Cab mounted on viscous supports
- Air conditioning
- Adjustable suspension seat with head rest and adjustable arm rests
- Sliding front window removable in two parts

- Room light
- Intermittent windshield wiper
- Cigarette lighter and ashtray
- Cup holder
- Hot and cool box
- Colour monitor display
- Fuel control dial
- Remote radio ON/OFF switch on console
- Loudspeakers and connections for radio
- 12 V power outlet
- PC interface port for diagnostics
- Hydraulic control levers with 3 switches
- Sun visor
- Sunroof

# Special Features

Tilting cabin activated by 2 cylinders for better stability of cabin and easier visibility of tools.



# Operational data - DX300LC Demolition

## Standard configuration 3 pieces: Boom 5,58 m

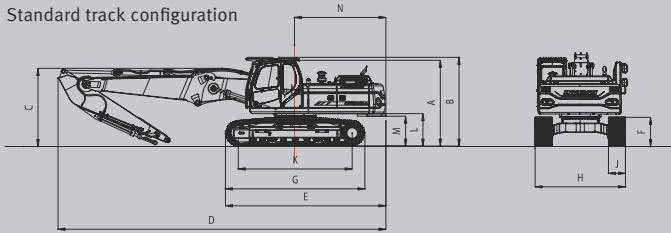
### \* Dimensions

| Track Type |   | Log Loader | Standard LC | Narrow LC |
|------------|---|------------|-------------|-----------|
| A          | Overall height of cab (without canopy) mm                   | 3.337      | 3.065       | 3.065     |
| B          | Overall height of cab (with canopy) mm                      | 3.417      | 3.145       | 3.145     |
| C          | Overall height of front mm                                  | 3.440      | 3.440       | 3.440     |
| D          | Overall length mm   | 12.400     | 12.400      | 12.400    |
| E          | Overall length (without front) mm                           | 5.700      | 5.700       | 5.700     |
| F          | Track height mm   | 1.244      | 1.044       | 1.044     |
| G          | Track overall length mm                                     | 4.950      | 4.950       | 4.950     |
| H          | Track overall width mm                                      | 3.600      | 3.200       | 3.000     |
| J          | Track shoe width mm   | 700        | 600         | 600       |
| K          | Tumbler distance mm   | 4.010      | 4.010       | 4.010     |
| L          | Upper structure ground clearance mm                         | 1.447      | 1.175       | 1.175     |
| M          | Upper structure ground clearance with add counter height mm | 1.332      | 1.060       | 1.060     |
| N          | Tail swing radius mm  | 3.240      | 3.240       | 3.240     |

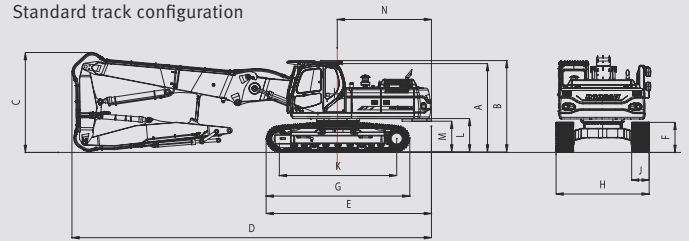
### \* Specifications

|   |        |           |           |           |
|---|--------|-----------|-----------|-----------|
| Operating weight (without tool)         | kg     | 36.650    | 34.650    | 34.530    |
| Maximum reach at ground level (pin arm) | mm     | 12.085    | 12.085    | 12.085    |
| Maximum height (pin arm)                | mm     | 17.877    | 17.600    | 17.600    |
| Working capacity                        | kg     | 2.600     | 2.200     | 2.000     |
| DOOSAN engine                           |        | DLo8      | DLo8      | DLo8      |
| Working angle limiter                   | °      | 30        | 30        | 30        |
| Horsepower                              | kW/rpm | 147/1.900 | 147/1.900 | 147/1.900 |

Standard track configuration



Standard track configuration



## Optional configuration 2 pieces: Boom 4,25 m

### \* Dimensions

| Track Type |   | Log Loader | Standard LC | Narrow LC |
|------------|---|------------|-------------|-----------|
| A          | Overall height of cab (without canopy) mm                   | 3.337      | 3.065       | 3.065     |
| B          | Overall height of cab (with canopy) mm                      | 3.417      | 3.145       | 3.145     |
| C          | Overall height of front mm                                  | 2.490      | 2.745       | 2.745     |
| D          | Overall length mm   | 11.625     | 11.625      | 11.625    |
| E          | Overall length (without front) mm                           | 5.700      | 5.700       | 5.700     |
| F          | Track height mm   | 1.244      | 1.044       | 1.044     |
| G          | Track overall length mm                                     | 4.950      | 4.950       | 4.950     |
| H          | Track overall width mm                                      | 3.600      | 3.200       | 3.000     |
| J          | Track shoe width mm   | 700        | 600         | 600       |
| K          | Tumbler distance mm   | 4.010      | 4.010       | 4.010     |
| L          | Upper structure ground clearance mm                         | 1.447      | 1.175       | 1.175     |
| M          | Upper structure ground clearance with add counter height mm | 1.332      | 1.060       | 1.060     |
| N          | Tail swing radius mm  | 3.240      | 3.240       | 3.240     |

### \* Specifications

|   |        |           |           |           |
|---|--------|-----------|-----------|-----------|
| Operating weight (without tool)         | kg     | 35.400    | 33.400    | 33.280    |
| Maximum reach at ground level (pin arm) | mm     | 10.526    | 10.526    | 10.526    |
| Maximum height (pin arm)                | mm     | 12.390    | 12.113    | 12.113    |
| Working capacity                        | kg     | 4.000     | 4.000     | 3.500     |
| DOOSAN engine                           |        | DLo8      | DLo8      | DLo8      |
| Horsepower                              | kW/rpm | 147/1.900 | 147/1.900 | 147/1.900 |

## Optional configuration Digging Boom

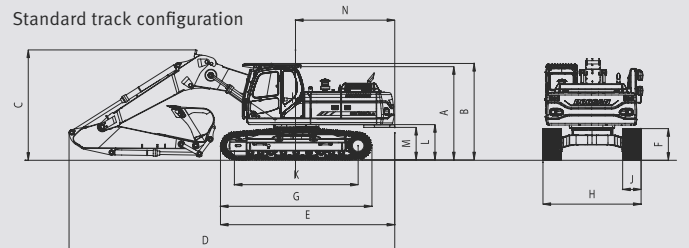
### \* Dimensions

| Track Type |   | Log Loader | Standard LC | Narrow LC |
|------------|---|------------|-------------|-----------|
| A          | Overall height of cab (without canopy) mm                   | 3.337      | 3.065       | 3.065     |
| B          | Overall height of cab (with canopy) mm                      | 3.417      | 3.145       | 3.145     |
| C          | Overall height of front mm                                  | 3.630      | 3.600       | 3.600     |
| D          | Overall length mm   | 10.630     | 10.630      | 10.630    |
| E          | Overall length (without front) mm                           | 5.700      | 5.700       | 5.700     |
| F          | Track height mm   | 1.244      | 1.044       | 1.044     |
| G          | Track overall length mm                                     | 4.950      | 4.950       | 4.950     |
| H          | Track overall width mm                                      | 3.600      | 3.200       | 3.000     |
| J          | Track shoe width mm   | 700        | 600         | 600       |
| K          | Tumbler distance mm   | 4.010      | 4.010       | 4.010     |
| L          | Upper structure ground clearance mm                         | 1.447      | 1.175       | 1.175     |
| M          | Upper structure ground clearance with add counter height mm | 1.332      | 1.060       | 1.060     |
| N          | Tail swing radius mm  | 3.240      | 3.240       | 3.240     |

### \* Specifications

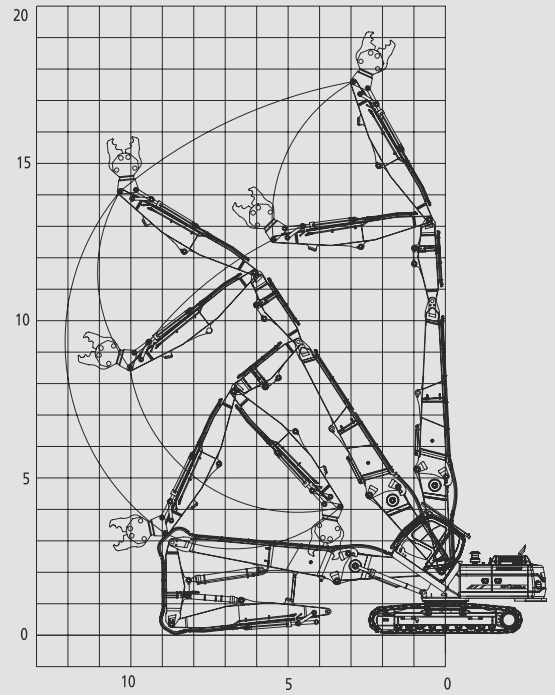
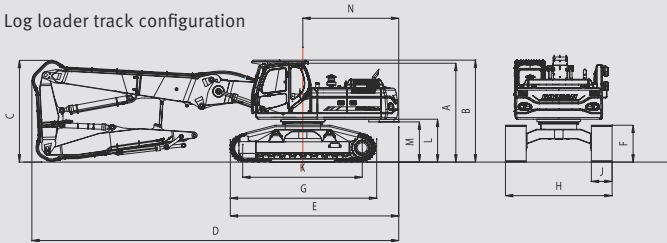
|   |        |           |           |           |
|---|--------|-----------|-----------|-----------|
| Operating weight (without tool)         | kg     | 35.100    | 33.100    | 32.980    |
| Maximum reach at ground level (pin arm) | mm     | 10.654    | 10.654    | 10.654    |
| Maximum height (pin arm)                | mm     | 10.415    | 10.138    | 10.138    |
| Working capacity                        | kg     | 4.000     | 4.000     | 3.500     |
| DOOSAN engine                           |        | DLo8      | DLo8      | DLo8      |
| Horsepower                              | kW/rpm | 147/1.900 | 147/1.900 | 147/1.900 |

Standard track configuration

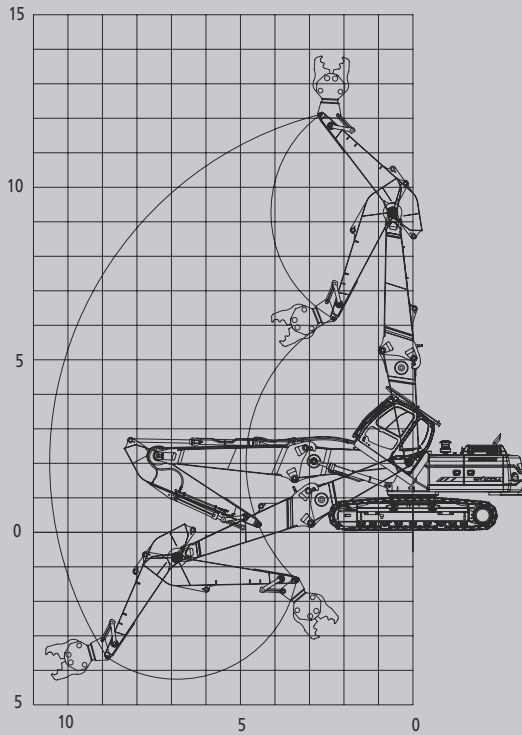


## Front 3 pieces Working Ranges

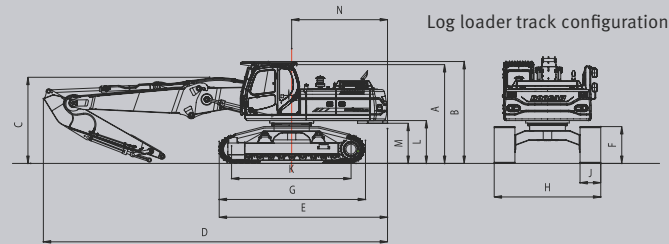
Log loader track configuration



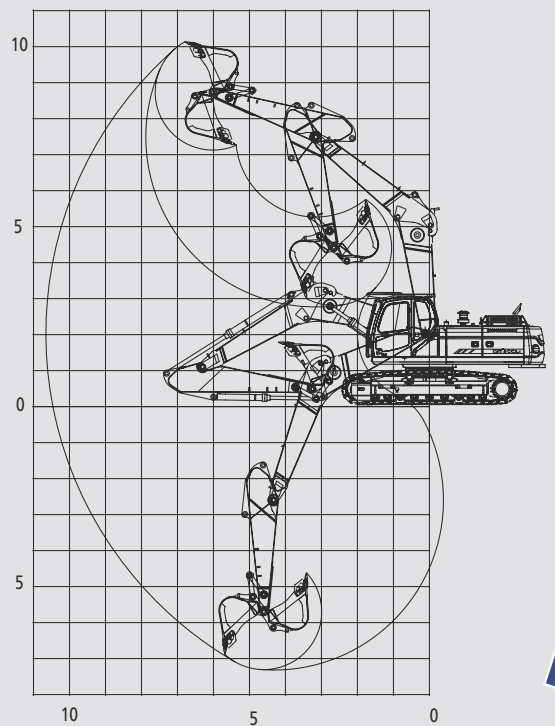
## Front 2 pieces Working Ranges



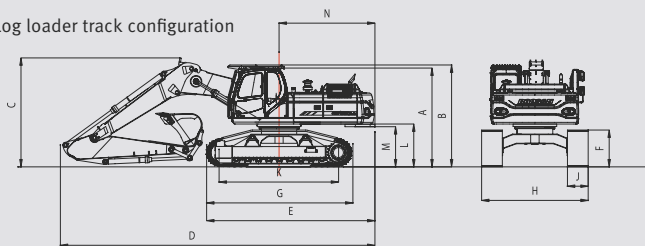
Log loader track configuration



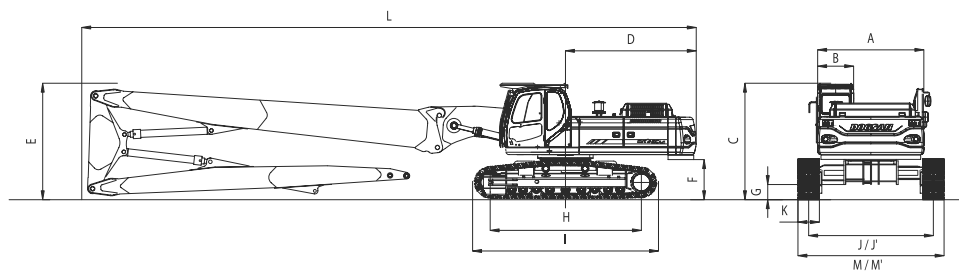
## Digging Front Working Ranges



Log loader track configuration



# Operational data - DX340LC Demolition



**DX340LC**

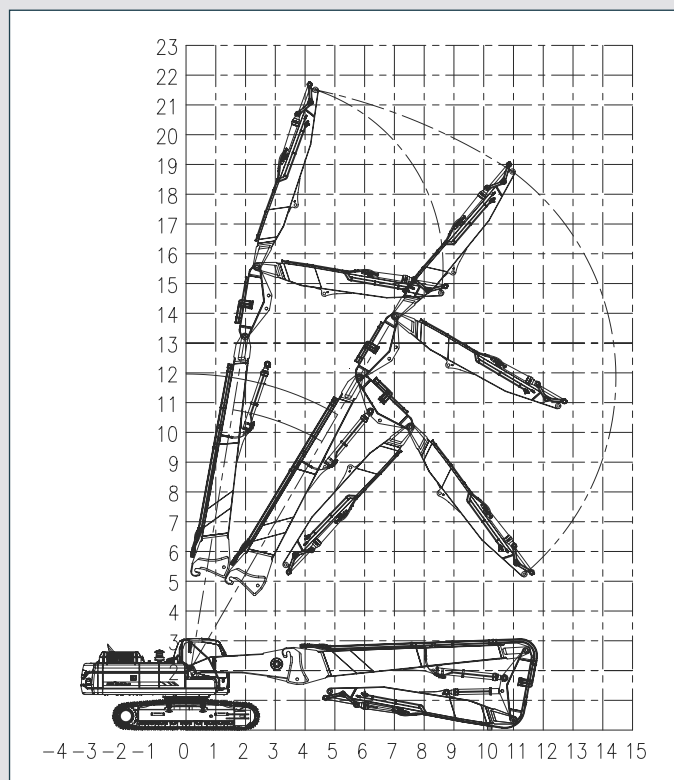
## Standard configuration 3 pieces: Boom 11,30 m

### \* Dimensions

| Standard Track |  |    |        |
|----------------|--|----|--------|
| A              | Overall width of upper structure         | mm | 2.990  |
| B              | Overall width of cab.                    | mm | 1.010  |
| C              | Overall height of cab.                   | mm | 3.100  |
| D              | Tail swing radius                        | mm | 3.500  |
| E              | Overall height of cab.                   | mm | 3.085  |
| F              | Clearance under counterweight            | mm | 1.060  |
| G              | Ground clearance                         | mm | 395    |
| H              | Tumbler distance                         | mm | 4.050  |
| I              | Track length                             | mm | 4.940  |
| J              | Track gauge (for transportation)         | mm | 2.390  |
| J'             | Track gauge (working mode)               | mm | 3.490  |
| K              | Track shoe width                         | mm | 600    |
| L              | Overall length                           | mm | 15.350 |
| M              | Overall track width (for transportation) | mm | 2.990  |
| M'             | Overall track width (working mode)       | mm | 4.090  |

### \* Specifications

|               |        |           |
|---------------|--------|-----------|
| DOOSAN engine |        | DL08      |
| Horsepower    | kW/rpm | 184/1.750 |



# Operational data - DX420LC Demolition

## DX420LC

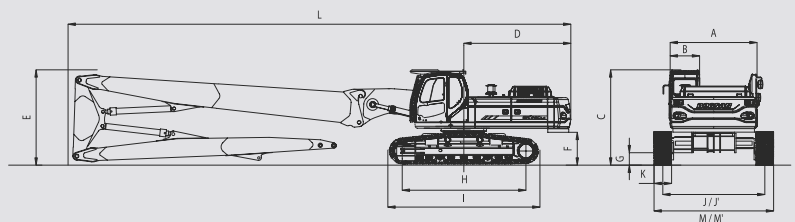
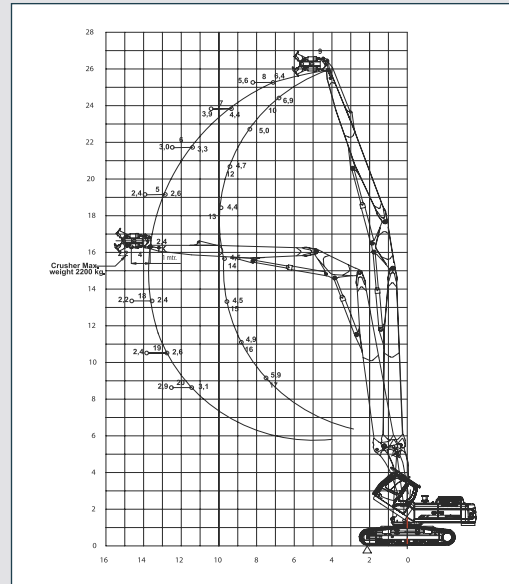
Standard configuration 3 pieces: Boom 12,99 m

### \* Dimensions

| Standard Track |  |           |
|----------------|--|-----------|
| A              | Overall width of upper structure         | mm 2.990  |
| B              | Overall width of cab.                    | mm 1.010  |
| C              | Overall height of cab.                   | mm 3.260  |
| D              | Tail swing radius                        | mm 3.660  |
| E              | Overall height of cab.                   | mm 3.260  |
| F              | Clearance under counterweight            | mm 1.125  |
| G              | Ground clearance                         | mm 420    |
| H              | Tumbler distance                         | mm 4.250  |
| I              | Track length                             | mm 5.200  |
| J              | Track gauge (for transportation)         | mm 2.390  |
| J'             | Track gauge (working mode)               | mm 3.490  |
| K              | Track shoe width                         | mm 600    |
| L              | Overall length                           | mm 17.200 |
| M              | Overall track width (for transportation) | mm 2.990  |
| M'             | Overall track width (working mode)       | mm 4.090  |

### \* Specifications

|               |        |           |
|---------------|--------|-----------|
| DOOSAN engine |        | DV11      |
| Horsepower    | kW/rpm | 218/1.800 |



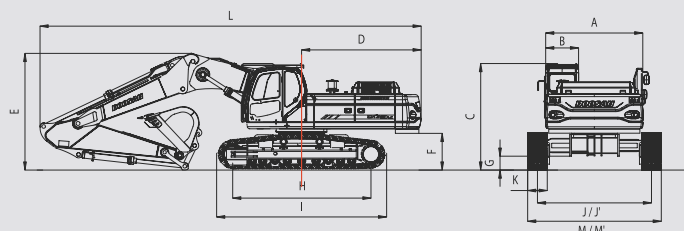
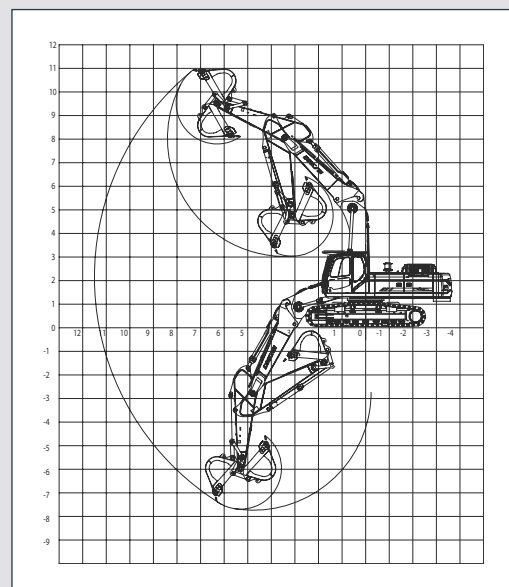
Optional configuration Digging Boom

### \* Dimensions

| Standard Track |  |           |
|----------------|--|-----------|
| A              | Overall width of upper structure         | mm 2.990  |
| B              | Overall width of cab.                    | mm 1.010  |
| C              | Overall height of cab.                   | mm 3.260  |
| D              | Tail swing radius                        | mm 3.660  |
| E              | Overall height of cab.                   | mm 3.600  |
| F              | Clearance under counterweight            | mm 1.125  |
| G              | Ground clearance                         | mm 420    |
| H              | Tumbler distance                         | mm 4.250  |
| I              | Track length                             | mm 5.200  |
| J              | Track gauge (for transportation)         | mm 2.390  |
| J'             | Track gauge (working mode)               | mm 3.490  |
| K              | Track shoe width                         | mm 600    |
| L              | Overall length                           | mm 11.670 |
| M              | Overall track width (for transportation) | mm 2.990  |
| M'             | Overall track width (working mode)       | mm 4.090  |

### \* Specifications

|               |        |           |
|---------------|--------|-----------|
| DOOSAN engine |        | DV11      |
| Horsepower    | kW/rpm | 218/1.800 |



# Lifting capacity



## DX300 Front Demolition configuration

Boom: 8.600 mm - Arm: 2.600 + 5.000 mm – Counterweight: 6.800 kg – Weight: 34.650 kg

Units: 1.000 kg

| A (m)<br>B (m) | 5      |        | 7      |        | 9      |        | 11     |        | 13     |      | 15     |      | Max. lift |        | A(m)  |
|----------------|--------|--------|--------|--------|--------|--------|--------|--------|--------|------|--------|------|-----------|--------|-------|
|                |        |        |        |        |        |        |        |        |        |      |        |      |           |        |       |
| 17             | 5,34 * | 5,34 * |        |        |        |        |        |        |        |      |        |      | 5,30 *    | 5,30 * | 5,21  |
| 16             | 4,29 * | 4,29 * | 3,85 * | 3,85 * |        |        |        |        |        |      |        |      | 3,83 *    | 3,83 * | 7,54  |
| 15             |        |        | 3,40 * | 3,40 * | 3,14 * | 3,14 * |        |        |        |      |        |      | 3,14 *    | 3,14 * | 9,18  |
| 14             |        |        | 3,22 * | 3,22 * | 2,85 * | 2,85 * |        |        |        |      |        |      | 2,73 *    | 2,73 * | 10,46 |
| 13             |        |        | 3,18 * | 3,18 * | 2,76 * | 2,76 * | 2,47 * | 2,47 * |        |      |        |      | 2,45 *    | 2,45 * | 11,53 |
| 12             |        |        | 3,24 * | 3,24 * | 2,77 * | 2,77 * | 2,39 * | 2,39 * |        |      |        |      | 2,25 *    | 2,00 * | 12,41 |
| 11             |        |        |        |        | 2,85 * | 2,85 * | 2,40 * | 2,40 * | 2,11 * | 1,76 |        |      | 2,10 *    | 1,67   | 13,16 |
| 10             |        |        |        |        | 3,00 * | 3,00 * | 2,46 * | 2,46 * | 2,07 * | 1,80 |        |      | 1,98 *    | 1,42   | 13,80 |
| 9              |        |        |        |        |        |        | 2,58 * | 2,58 * | 2,10 * | 1,78 |        |      | 1,89 *    | 1,22   | 14,33 |
| 8              |        |        |        |        |        |        | 2,74 * | 2,66   | 2,16 * | 1,73 |        |      | 1,83 *    | 1,07   | 14,78 |
| 7              |        |        |        |        |        |        | 2,96 * | 2,50   | 2,25 * | 1,65 | 1,80 * | 0,99 | 1,78 *    | 0,94   | 15,15 |
| 6              |        |        |        |        |        |        |        |        | 2,37 * | 1,56 | 1,83 * | 0,97 | 1,75 *    | 0,84   | 15,45 |
| 5              |        |        |        |        |        |        |        |        | 2,50 * | 1,46 | 1,87 * | 0,93 | 1,73 *    | 0,77   | 15,67 |
| 4              |        |        |        |        |        |        |        |        | 2,64 * | 1,36 | 1,93 * | 0,88 | 1,72 *    | 0,71   | 15,83 |
| 3              |        |        |        |        |        |        |        |        | 2,57 * | 1,26 | 1,97 * | 0,84 | 1,63 *    | 0,67   | 15,93 |
| 2              |        |        |        |        |        |        |        |        | 2,49 * | 1,16 | 1,88 * | 0,79 | 1,52 *    | 0,64   | 15,96 |
| 1              |        |        |        |        |        |        |        |        | 2,37 * | 1,08 | 1,76 * | 0,75 | 1,39 *    | 0,63   | 15,93 |
| 0              |        |        |        |        |        |        |        |        | 2,23 * | 1,02 | 1,62 * | 0,73 | 1,26 *    | 0,63   | 15,83 |

## DX300 Digging Front configuration

Boom: 6.250 mm - Arm: 3.100 mm – Bucket: SAE 1,27 m³ – Counterweight: 6.800 kg – Weight: 33.100 kg

Units: 1.000 kg

| A (m)<br>B (m) | 5       |        | 7 |  | 9      |        | Max. lift |        | A(m) |
|----------------|---------|--------|---|--|--------|--------|-----------|--------|------|
|                |         |        |   |  |        |        |           |        |      |
| 8              |         |        |   |  |        |        | 5,14 *    | 5,14 * | 6,85 |
| 7              |         |        |   |  | 5,35 * | 5,35 * | 4,91 *    | 4,91 * | 7,62 |
| 6              |         |        |   |  | 5,44 * | 5,44 * | 4,80 *    | 4,80 * | 8,20 |
| 5              |         |        |   |  | 5,70 * | 5,70 * | 4,78 *    | 4,67   | 8,62 |
| 4              | 7,78 *  | 7,78 * |   |  | 6,07 * | 6,07 * | 4,84 *    | 4,30   | 8,91 |
| 3              | 8,85 *  | 8,85 * |   |  | 6,50 * | 6,31   | 5,54 *    | 4,12   | 9,07 |
| 2              | 9,82 *  | 9,74   |   |  | 6,92 * | 6,00   | 5,68 *    | 4,01   | 9,13 |
| 1              | 10,55 * | 9,18   |   |  | 7,29 * | 5,73   | 5,80 *    | 3,90   | 9,07 |
| 0              | 10,97 * | 8,82   |   |  | 7,56 * | 5,52   | 5,92 *    | 3,89   | 8,90 |

## DX300 Straight Boom configuration

Boom: 7.270 mm - Arm: 3.500 mm – Bucket: SAE 0,81 m³ – Counterweight: 6.800 kg – Weight: 31.090 kg

Units: 1.000 kg

| A (m)<br>B (m) | 4       |         | 6       |        | 8      |        | 10     |      | Max. lift |        | A(m)  |
|----------------|---------|---------|---------|--------|--------|--------|--------|------|-----------|--------|-------|
|                |         |         |         |        |        |        |        |      |           |        |       |
| 11             | 5,41 *  | 5,41 *  |         |        |        |        |        |      | 4,61 *    | 4,61 * | 4,89  |
| 10             |         |         |         |        | 4,67 * | 4,67 * |        |      | 4,11 *    | 4,11 * | 6,43  |
| 9              |         |         |         |        | 5,17 * | 5,17 * |        |      | 3,87 *    | 3,87 * | 7,51  |
| 8              | 5,05 *  | 5,05 *  | 5,39 *  | 5,39 * | 4,38 * | 4,38 * |        |      | 3,75 *    | 3,75 * | 8,35  |
| 7              | 5,34 *  | 5,34 *  | 5,77 *  | 5,77 * | 5,17 * | 5,17 * |        |      | 3,69 *    | 3,69 * | 8,99  |
| 6              | 6,81 *  | 6,81 *  | 6,64 *  | 6,64 * | 5,84 * | 5,58   |        |      | 3,70 *    | 3,70 * | 9,48  |
| 5              | 13,26 * | 13,26 * | 8,75 *  | 8,45   | 6,71 * | 5,44   |        |      | 3,75 *    | 3,75 * | 9,85  |
| 4              |         |         | 9,50 *  | 8,04   | 7,22 * | 5,28   | 4,20 * | 3,73 | 3,84 *    | 3,67   | 10,10 |
| 3              |         |         | 9,84 *  | 7,65   | 7,32 * | 5,11   | 4,90 * | 3,67 | 3,99 *    | 3,53   | 10,25 |
| 2              |         |         | 10,00 * | 7,33   | 7,35 * | 4,96   | 5,40 * | 3,61 | 4,19 *    | 3,46   | 10,30 |
| 1              |         |         | 9,90 *  | 7,10   | 7,28 * | 4,84   | 5,50 * | 3,57 | 4,46 *    | 3,45   | 10,25 |
| 0              |         |         | 9,53 *  | 6,97   | 7,05 * | 4,75   | 5,18 * | 3,54 | 4,83 *    | 3,50   | 10,10 |

1. The nominal forces are based on the SAE J1097 standard.

2. The load point is the hook at the rear of the bucket.

3. \* = The nominal loads are based on hydraulic capacity.

4. The nominal loads do not exceed 87% of the hydraulic capacity or 75% of the capacity of the swing.

: Nominal force

: Nominal force at the side or 360°



## DX300 Narrow - Front Demolition configuration

Boom: 8.600 mm - Arm: 2.600 + 5.000 mm – Counterweight: 6.800 kg – Weight: 34.550 kg

Units: 1.000 kg

| A (m)<br>B (m) | 5      |        | 7      |        | 9      |        | 11     |        | 13     |      | 15     |      | Max. lift |        | A(m)   |       |
|----------------|--------|--------|--------|--------|--------|--------|--------|--------|--------|------|--------|------|-----------|--------|--------|-------|
|                |        |        |        |        |        |        |        |        |        |      |        |      |           |        |        |       |
| 17             | 5,34 * | 5,34 * |        |        |        |        |        |        |        |      |        |      |           | 5,30 * | 5,30 * | 5,21  |
| 16             | 4,29 * | 4,29 * | 3,85 * | 3,85 * |        |        |        |        |        |      |        |      |           | 3,83 * | 3,83 * | 7,54  |
| 15             |        |        | 3,40 * | 3,40 * | 3,14 * | 3,14 * |        |        |        |      |        |      |           | 3,14 * | 3,14 * | 9,18  |
| 14             |        |        | 3,22 * | 3,22 * | 2,85 * | 2,85 * |        |        |        |      |        |      |           | 2,73 * | 2,73 * | 10,46 |
| 13             |        |        | 3,18 * | 3,18 * | 2,76 * | 2,76 * | 2,47 * | 2,47 * |        |      |        |      |           | 2,45 * | 2,44 * | 11,53 |
| 12             |        |        | 3,24 * | 3,24 * | 2,77 * | 2,77 * | 2,39 * | 2,39 * |        |      |        |      |           | 2,25 * | 2,00 * | 12,41 |
| 11             |        |        |        |        | 2,85 * | 2,85 * | 2,40 * | 2,40 * | 2,11 * | 1,76 |        |      |           | 2,10 * | 1,67   | 13,16 |
| 10             |        |        |        |        | 3,00 * | 3,00 * | 2,46 * | 2,46 * | 2,07 * | 1,80 |        |      |           | 1,98 * | 1,41   | 13,80 |
| 9              |        |        |        |        |        |        | 2,58 * | 2,58 * | 2,10 * | 1,78 |        |      |           | 1,89 * | 1,22   | 14,33 |
| 8              |        |        |        |        |        |        | 2,74 * | 2,65   | 2,16 * | 1,72 |        |      |           | 1,83 * | 1,06   | 14,78 |
| 7              |        |        |        |        |        |        | 2,96 * | 2,49   | 2,25 * | 1,65 | 1,80 * | 0,99 |           | 1,78 * | 0,94   | 15,15 |
| 6              |        |        |        |        |        |        |        |        | 2,37 * | 1,55 | 1,83 * | 0,97 |           | 1,75 * | 0,84   | 15,45 |
| 5              |        |        |        |        |        |        |        |        | 2,50 * | 1,45 | 1,87 * | 0,93 |           | 1,73 * | 0,76   | 15,67 |
| 4              |        |        |        |        |        |        |        |        | 2,64 * | 1,35 | 1,93 * | 0,88 |           | 1,72 * | 0,70   | 15,83 |
| 3              |        |        |        |        |        |        |        |        | 2,58 * | 1,25 | 1,97 * | 0,83 |           | 1,63 * | 0,66   | 15,93 |
| 2              |        |        |        |        |        |        |        |        | 2,49 * | 1,16 | 1,88 * | 0,79 |           | 1,52 * | 0,64   | 15,96 |
| 1              |        |        |        |        |        |        |        |        | 2,38 * | 1,08 | 1,77 * | 0,75 |           | 1,40 * | 0,63   | 15,93 |
| 0              |        |        |        |        |        |        |        |        | 2,24 * | 1,02 | 1,62 * | 0,72 |           | 1,27 * | 0,63   | 15,83 |

## DX300 Narrow - Digging Front configuration

Boom: 6.250 mm - Arm: 3.100 mm – Bucket: SAE 1,27 m<sup>3</sup> – Counterweight: 6.800 kg – Weight: 33.000 kg

Units: 1.000 kg

| A (m)<br>B (m) | 5 |         | 7      |      | 9      |        | Max. lift |      | A(m)   |        |      |
|----------------|---|---------|--------|------|--------|--------|-----------|------|--------|--------|------|
|                |   |         |        |      |        |        |           |      |        |        |      |
| 8              |   |         |        |      |        |        |           |      | 5,14 * | 5,47 * | 6,85 |
| 7              |   |         |        |      | 5,35 * | 5,35 * |           |      | 4,91 * | 4,91 * | 7,62 |
| 6              |   |         |        |      | 5,44 * | 5,44 * |           |      | 4,80 * | 4,80 * | 8,20 |
| 5              |   |         |        |      | 5,70 * | 5,70 * |           |      | 4,78 * | 4,66   | 8,62 |
| 4              |   | 7,78 *  | 7,78 * |      | 6,07 * | 6,07 * |           |      | 4,84 * | 4,29   | 8,91 |
| 3              |   | 8,85 *  | 8,85 * |      | 6,50 * | 6,29   | 5,54 *    | 4,10 | 4,97 * | 4,04   | 9,07 |
| 2              |   | 9,82 *  |        | 9,71 | 6,92 * | 5,98   | 5,68 *    | 3,99 | 5,18 * | 3,89   | 9,13 |
| 1              |   | 10,55 * |        | 9,15 | 7,29 * | 5,71   | 5,80 *    | 3,89 | 5,49 * | 3,84   | 9,07 |
| 0              |   | 10,97 * |        | 8,79 | 7,56 * | 5,50   |           |      | 5,92 * | 3,88   | 8,90 |

## DX300 Narrow - Straight Boom configuration

Boom: 7.270 mm - Arm: 3.500 mm – Bucket: SAE 0,93 m<sup>3</sup> – Counterweight: 6.800 kg – Weight: 30.990 kg

Units: 1.000 kg

| A (m)<br>B (m) | 4       |         | 6       |        | 8      |        | 10     |      | Max. lift |  | A(m)   |        |       |
|----------------|---------|---------|---------|--------|--------|--------|--------|------|-----------|--|--------|--------|-------|
|                |         |         |         |        |        |        |        |      |           |  |        |        |       |
| 11             | 5,41 *  | 5,41 *  |         |        |        |        |        |      |           |  | 4,61 * | 4,61 * | 4,89  |
| 10             |         |         |         |        | 4,67 * | 4,67 * |        |      |           |  | 4,11 * | 4,11 * | 6,43  |
| 9              |         |         |         |        | 5,17 * | 5,17 * |        |      |           |  | 3,87 * | 3,87 * | 7,51  |
| 8              | 5,05 *  | 5,05 *  | 5,39 *  | 5,39 * | 4,38 * | 4,38 * |        |      |           |  | 3,75 * | 3,75 * | 8,35  |
| 7              | 5,34 *  | 5,34 *  | 5,77 *  | 5,77 * | 5,17 * | 5,17 * |        |      |           |  | 3,69 * | 3,69 * | 8,99  |
| 6              | 6,81 *  | 6,81 *  | 6,64 *  | 6,64 * | 5,84 * | 5,56   |        |      |           |  | 3,70 * | 3,70 * | 9,48  |
| 5              | 13,26 * | 13,26 * | 8,75 *  | 8,42   | 6,71 * | 5,42   |        |      |           |  | 3,75 * | 3,75 * | 9,85  |
| 4              |         |         | 9,50 *  | 8,02   | 7,22 * | 5,26   | 4,20 * | 3,72 |           |  | 3,84 * | 3,66   | 10,10 |
| 3              |         |         | 9,84 *  | 7,63   | 7,32 * | 5,09   | 4,90 * | 3,66 |           |  | 3,99 * | 3,52   | 10,25 |
| 2              |         |         | 10,00 * | 7,30   | 7,35 * | 4,94   | 5,40 * | 3,60 |           |  | 4,19 * | 3,45   | 10,30 |
| 1              |         |         | 9,90 *  | 7,07   | 7,28 * | 4,82   | 5,50 * | 3,55 |           |  | 4,46 * | 3,44   | 10,25 |
| 0              |         |         | 9,53 *  | 6,94   | 7,05 * | 4,74   | 5,18 * | 3,53 |           |  | 4,83 * | 3,48   | 10,10 |

# Lifting capacity

**DX340LC**

## DX340 Front Demolition configuration

Boom: 11.300 mm - Arm: 2.400 + 6.250 mm – Counterweight: 8.800 kg – Weight: 45.420 kg

Units: 1.000 kg

| A (m)<br>B (m) | 10     |        | 12     |        | 14     |        | 16     |        | 18     |        | 20     |        | Max. lift |        | A(m)  |
|----------------|--------|--------|--------|--------|--------|--------|--------|--------|--------|--------|--------|--------|-----------|--------|-------|
|                |        |        |        |        |        |        |        |        |        |        |        |        |           |        |       |
| 21             |        |        |        |        |        |        |        |        |        |        |        |        | 7,26 *    | 7,26 * | 6,23  |
| 20             |        |        |        |        |        |        |        |        |        |        |        |        | 4,73 *    | 4,73 * | 8,77  |
| 19             | 4,03 * | 4,03 * |        |        |        |        |        |        |        |        |        |        | 3,65 *    | 3,65 * | 10,59 |
| 18             | 4,09 * | 4,09 * | 3,04 * | 3,04 * |        |        |        |        |        |        |        |        | 3,00 *    | 3,00 * | 12,08 |
| 17             | 4,12 * | 4,12 * | 3,14 * | 3,14 * |        |        |        |        |        |        |        |        | 2,56 *    | 2,56 * | 13,30 |
| 16             | 4,14 * | 4,14 * | 3,17 * | 3,17 * | 2,39 * | 2,39 * |        |        |        |        |        |        | 2,23 *    | 2,23 * | 14,35 |
| 15             | 4,14 * | 4,14 * | 3,19 * | 3,19 * | 2,45 * | 2,45 * |        |        |        |        |        |        | 1,97 *    | 1,97 * | 15,28 |
| 14             | 4,14 * | 4,14 * | 3,19 * | 3,19 * | 2,47 * | 2,47 * | 1,80 * | 1,80 * |        |        |        |        | 1,76 *    | 1,76 * | 16,07 |
| 13             |        |        | 3,18 * | 3,18 * | 2,47 * | 2,47 * | 1,87 * | 1,87 * |        |        |        |        | 1,58 *    | 1,58 * | 16,78 |
| 12             |        |        | 3,17 * | 3,17 * | 2,46 * | 2,46 * | 1,88 * | 1,88 * |        |        |        |        | 1,42 *    | 1,41   | 17,40 |
| 11             |        |        |        |        | 2,44 * | 2,44 * | 1,88 * | 1,88 * |        |        |        |        | 1,29 *    | 1,23   | 17,94 |
| 10             |        |        |        |        | 2,42 * | 2,42 * | 1,86 * | 1,86 * | 1,33 * | 1,30   |        |        | 1,16 *    | 1,09   | 18,41 |
| 9              |        |        |        |        | 2,38 * | 2,38 * | 1,84 * | 1,84 * | 1,34 * | 1,31   |        |        | 1,05 *    | 0,97   | 18,81 |
| 8              |        |        |        |        |        |        | 1,81 * | 1,81 * | 1,32 * | 1,29   |        |        | 0,94 *    | 0,87   | 19,15 |
| 7              |        |        |        |        |        |        | 1,76 * | 1,76 * | 1,30 * | 1,24   |        |        | 0,84 *    | 0,80   | 19,44 |
| 6              |        |        |        |        |        |        | 1,71 * | 1,71 * | 1,26 * | 1,19   |        |        | 0,73 *    | 0,73   | 19,66 |
| 5              |        |        |        |        |        |        | 1,65 * | 1,64   | 1,20 * | 1,13   |        |        | 0,63 *    | 0,63 * | 19,84 |
| 4              |        |        |        |        |        |        | 1,58 * | 1,53   | 1,14 * | 1,06   |        |        | 0,53 *    | 0,53 * | 19,96 |
| 3              |        |        |        |        |        |        | 1,50 * | 1,42   | 1,07 * | 1,00   | 0,46 * | 0,46 * | 0,43 *    | 0,43 * | 20,04 |
| 2              |        |        |        |        |        |        | 1,40 * | 1,32   | 0,98 * | 0,94   | 0,37 * | 0,37 * | 0,32 *    | 0,32 * | 20,06 |
| 1              |        |        |        |        |        |        | 1,29 * | 1,23   | 0,88 * | 0,88 * | 0,24 * | 0,24 * | 0,21 *    | 0,21 * | 20,03 |
| 0              |        |        |        |        |        |        | 1,17 * | 1,16   | 0,77 * | 0,77 * |        |        | 0,09 *    | 0,09 * | 19,95 |

## DX340 Digging Front configuration

Boom: 6.500 mm - Arm: 3.200 mm – Bucket: SAE 1,48 m<sup>3</sup> – Counterweight: 8.800 kg – Weight: 40.850 kg

Units: 1.000 kg

| A (m)<br>B (m) | 5       |         | 7       |         | 9      |        | Max. lift |        | A(m) |
|----------------|---------|---------|---------|---------|--------|--------|-----------|--------|------|
|                |         |         |         |         |        |        |           |        |      |
| 8              |         |         | 7,74 *  | 7,74 *  |        |        | 7,79 *    | 7,79 * | 7,28 |
| 7              |         |         | 7,69 *  | 7,69 *  |        |        | 7,65 *    | 7,65 * | 8,01 |
| 6              |         |         | 7,94 *  | 7,94 *  |        |        | 7,61 *    | 7,61 * | 8,56 |
| 5              |         |         | 8,38 *  | 8,38 *  |        |        | 7,61 *    | 7,61 * | 8,96 |
| 4              | 11,75 * | 11,75 * | 8,95 *  | 8,95 *  | 7,74 * | 7,74 * | 7,66 *    | 7,66 * | 9,23 |
| 3              | 13,29 * | 13,29 * | 9,57 *  | 9,57 *  | 7,94 * | 7,94 * | 7,74 *    | 7,72   | 9,39 |
| 2              | 14,57 * | 14,57 * | 10,14 * | 10,14 * | 8,14 * | 8,13   | 7,84 *    | 7,58   | 9,43 |
| 1              | 15,40 * | 15,40 * | 10,60 * | 10,60 * | 8,29 * | 8,03   | 7,96 *    | 7,58   | 9,37 |
| 0              | 15,74 * | 15,74 * | 10,88 * | 10,88 * | 8,32 * | 7,96   | 8,10 *    | 7,72   | 9,20 |

1. The nominal forces are based on the SAE J1097 standard.

2. The load point is the hook at the rear of the bucket.

3. \* = The nominal loads are based on hydraulic capacity.

4. The nominal loads do not exceed 87% of the hydraulic capacity or 75% of the capacity of the swing.

: Nominal force

: Nominal force at the side or 360°

## DX420 Front Demolition configuration

Boom: 13.000 mm - Arm: 2.600 + 8.800 mm – Counterweight: 10.000 kg – Weight: 51.490 kg

Units: 1.000 kg

| B (m) | 8      |        | 10     |        | 12     |        | 14     |        | 16     |        | 18     |        | 20     |      | 22     |      | 24     |        | Max. lift |  |         |         |        |       |
|-------|--------|--------|--------|--------|--------|--------|--------|--------|--------|--------|--------|--------|--------|------|--------|------|--------|--------|-----------|--|---------|---------|--------|-------|
|       |        |        |        |        |        |        |        |        |        |        |        |        |        |      |        |      |        |        |           |  |         |         | A (m)  |       |
| 26    |        |        |        |        |        |        |        |        |        |        |        |        |        |      |        |      |        |        |           |  | 14,66 * | 14,66 * | 4,41   |       |
| 25    | 7,53 * | 7,53 * |        |        |        |        |        |        |        |        |        |        |        |      |        |      |        |        |           |  |         | 7,29 *  | 7,29 * | 8,23  |
| 24    | 7,46 * | 7,46 * | 5,79 * | 5,79 * |        |        |        |        |        |        |        |        |        |      |        |      |        |        |           |  |         | 5,36 *  | 5,36 * | 10,66 |
| 23    |        |        | 5,77 * | 5,77 * | 4,63 * | 4,63 * |        |        |        |        |        |        |        |      |        |      |        |        |           |  |         | 4,38 *  | 4,38 * | 12,50 |
| 22    |        |        | 5,75 * | 5,75 * | 4,64 * | 4,64 * | 3,77 * | 3,77 * |        |        |        |        |        |      |        |      |        |        |           |  |         | 3,74 *  | 3,74 * | 14,08 |
| 21    |        |        | 5,73 * | 5,73 * | 4,63 * | 4,63 * | 3,80 * | 3,80 * |        |        |        |        |        |      |        |      |        |        |           |  |         | 3,29 *  | 3,29 * | 15,40 |
| 20    |        |        | 5,72 * | 5,72 * | 4,63 * | 4,63 * | 3,81 * | 3,81 * | 3,14 * | 3,14 * |        |        |        |      |        |      |        |        |           |  |         | 2,95 *  | 2,95 * | 16,57 |
| 19    |        |        |        |        | 4,63 * | 4,63 * | 3,82 * | 3,82 * | 3,17 * | 3,17 * |        |        |        |      |        |      |        |        |           |  |         | 2,68 *  | 2,68 * | 17,58 |
| 18    |        |        |        |        | 4,63 * | 4,63 * | 3,82 * | 3,82 * | 3,18 * | 3,18 * | 2,61 * | 2,61 * |        |      |        |      |        |        |           |  |         | 2,45 *  | 2,34   | 18,50 |
| 17    |        |        |        |        | 4,63 * | 4,63 * | 3,82 * | 3,82 * | 3,18 * | 3,18 * | 2,64 * | 2,64 * |        |      |        |      |        |        |           |  |         | 2,26 *  | 2,07   | 19,32 |
| 16    |        |        | 5,72 * | 5,72 * | 4,63 * | 4,63 * | 3,82 * | 3,82 * | 3,19 * | 3,19 * | 2,65 * | 2,65 * | 2,11 * | 1,88 |        |      |        |        |           |  |         | 2,09 *  | 1,85   | 20,05 |
| 15    |        |        |        |        | 4,64 * | 4,64 * | 3,83 * | 3,83 * | 3,19 * | 3,19 * | 2,65 * | 2,65 * | 2,16 * | 2,00 |        |      |        |        |           |  |         | 1,94 *  | 1,66   | 20,72 |
| 14    |        |        |        |        | 4,65 * | 4,65 * | 3,83 * | 3,83 * | 3,18 * | 3,18 * | 2,65 * | 2,65 * | 2,18 * | 2,04 |        |      |        |        |           |  |         | 1,81 *  | 1,50   | 21,31 |
| 13    |        |        |        |        |        |        | 3,83 * | 3,83 * | 3,18 * | 3,18 * | 2,65 * | 2,65 * | 2,18 * | 2,05 |        |      |        |        |           |  |         | 1,69 *  | 1,36   | 21,84 |
| 12    |        |        |        |        |        |        | 3,82 * | 3,82 * | 3,17 * | 3,17 * | 2,64 * | 2,64 * | 2,18 * | 2,04 | 1,69 * | 1,37 |        |        |           |  |         | 1,57 *  | 1,25   | 22,31 |
| 11    |        |        |        |        |        |        | 3,82 * | 3,82 * | 3,16 * | 3,16 * | 2,63 * | 2,63 * | 2,17 * | 2,01 | 1,70 * | 1,39 |        |        |           |  |         | 1,47 *  | 1,15   | 22,73 |
| 10    |        |        |        |        |        |        |        |        | 3,15 * | 3,15 * | 2,61 * | 2,61 * | 2,15 * | 1,97 | 1,70 * | 1,39 |        |        |           |  |         | 1,37 *  | 1,07   | 23,09 |
| 9     |        |        |        |        |        |        |        |        | 3,13 * | 3,13 * | 2,59 * | 2,59 * | 2,13 * | 1,92 | 1,69 * | 1,37 |        |        |           |  |         | 1,27 *  | 0,99   | 23,41 |
| 8     |        |        |        |        |        |        |        |        | 3,10 * | 3,10 * | 2,57 * | 2,47   | 2,11 * | 1,86 | 1,67 * | 1,35 |        |        |           |  |         | 1,18 *  | 0,93   | 23,69 |
| 7     |        |        |        |        |        |        |        |        | 3,07 * | 3,07 * | 2,53 * | 2,37   | 2,07 * | 1,79 | 1,64 * | 1,31 |        |        |           |  |         | 1,09 *  | 0,88   | 23,91 |
| 6     |        |        |        |        |        |        |        |        | 3,02 * | 2,93   | 2,49 * | 2,26   | 2,03 * | 1,72 | 1,60 * | 1,27 | 1,05 * | 0,86   |           |  |         | 1,00 *  | 0,84   | 24,09 |
| 5     |        |        |        |        |        |        |        |        |        |        | 2,44 * | 2,15   | 1,99 * | 1,65 | 1,56 * | 1,23 | 1,02 * | 0,86   | 0,90 *    |  |         | 0,90 *  | 0,81   | 24,23 |
| 4     |        |        |        |        |        |        |        |        |        |        | 2,39 * | 2,05   | 1,93 * | 1,58 | 1,50 * | 1,18 | 0,97 * | 0,84   | 0,81 *    |  |         | 0,81 *  | 0,78   | 24,33 |
| 3     |        |        |        |        |        |        |        |        |        |        | 2,32 * | 1,94   | 1,87 * | 1,51 | 1,44 * | 1,14 | 0,91 * | 0,82   | 0,71 *    |  |         | 0,71 *  | 0,71 * | 24,39 |
| 2     |        |        |        |        |        |        |        |        |        |        | 2,24 * | 1,85   | 1,79 * | 1,44 | 1,37 * | 1,10 | 0,82 * | 0,81   | 0,62 *    |  |         | 0,62 *  | 0,62 * | 24,40 |
| 1     |        |        |        |        |        |        |        |        |        |        | 2,15 * | 1,75   | 1,71 * | 1,38 | 1,28 * | 1,06 | 0,72 * | 0,72 * | 0,51 *    |  |         | 0,51 *  | 0,51 * | 24,37 |
| 0     |        |        |        |        |        |        |        |        |        |        | 2,04 * | 1,67   | 1,61 * | 1,32 | 1,18 * | 1,02 | 0,59 * | 0,59 * | 0,40 *    |  |         | 0,40 *  | 0,40 * | 24,30 |

## DX420 Digging Front configuration

Boom: 6.700 mm - Arm: 3.250 mm – Bucket: SAE 1,90 m<sup>3</sup> – Counterweight: 10.000 kg – Weight: 48.520 kg

Units: 1.000 kg

| B (m) | 3 |  | 5 |  | 7       |         | 9       |         | Max. lift |        |        |       |
|-------|---|--|---|--|---------|---------|---------|---------|-----------|--------|--------|-------|
|       |   |  |   |  |         |         |         |         |           |        |        | A (m) |
| 9     |   |  |   |  |         |         |         |         |           |        | 9,29 * | 6,89  |
| 8     |   |  |   |  |         |         | 8,93 *  | 8,93 *  |           |        | 8,95 * | 7,78  |
| 7     |   |  |   |  |         |         | 9,01 *  | 9,01 *  |           |        | 8,70 * | 8,45  |
| 6     |   |  |   |  |         |         | 9,38 *  | 9,38 *  |           |        | 8,60 * | 8,96  |
| 5     |   |  |   |  | 12,54 * | 12,54 * | 9,95 *  | 9,95 *  | 8,78 *    | 8,78 * | 8,63 * | 9,33  |
| 4     |   |  |   |  | 14,31 * | 14,31 * | 10,63 * | 10,63 * | 8,99 *    | 8,99 * | 8,72 * | 9,59  |
| 3     |   |  |   |  | 16,06 * | 16,06 * | 11,34 * | 11,34 * | 9,25 *    | 9,25 * | 8,77 * | 9,73  |
| 2     |   |  |   |  | 17,44 * | 17,44 * | 11,99 * | 11,99 * | 9,49 *    | 9,32   | 8,85 * | 9,76  |
| 1     |   |  |   |  | 18,23 * | 18,23 * | 12,47 * | 12,47 * | 9,66 *    | 9,18   | 8,95 * | 9,70  |
| 0     |   |  |   |  | 18,46 * | 18,46 * | 12,74 * | 12,74 * | 9,70 *    | 9,07   | 9,05 * | 9,52  |



**Doosan Infracore**  
Construction Equipment

